

ARR0001101

VICKERY COAL MINE ANNUAL REHABILITATION REPORT

Wednesday 15 June 2022 to Wednesday 14 June 2023

Contents

Summary table.....3

Important.....3

Mine details.....4

 Project description.....4

 Life of mine.....4

 Current development consents, leases and licences.....4

 Changes to land ownership and land use.....4

Surface disturbance and rehabilitation activities during the reporting period.....5

Disturbance and rehabilitation statistics.....7

 Current disturbance and rehabilitation progression.....7

 Rehabilitation key performance indicators (KPIs).....7

 Progressive achievement of established rehabilitation.....8

 Variation to the rehabilitation schedule.....8

Rehabilitation monitoring and research findings.....9

 Rehabilitation monitoring.....9

 Status of performance against rehabilitation objectives and rehabilitation completion criteria.....9

 Outcomes of rehabilitation research and trials.....12

Attachment 1 – Reporting Definitions.....14

Attachment 2 – Definitions.....17

Attachment 3 – Rehabilitation Complaints.....23

Attachment 4 – Stakeholder consultation.....22

Attachment 5 – Plans.....25

Summary table

DETAIL

Mine	Vickery Coal Mine
Reference	ARR0001101
Annual report period commencement date	Wednesday 15 June 2022
Annual report period end date	Wednesday 14 June 2023
Forward program	FWP0001056
Mining leases	ML 1718 (1992), ML 1471 (1992), ML 1464 (1992), ML 1838 (1992), CL 316 (1973)
Lease holder(s)	VICKERY COAL PTY LTD, Whitehaven Coal Mining Limited
Contact	Daryl Robinson
Date of submission	Monday 14 August 2023

Important

The department may make the information in your report and any supporting information available for inspection by members of the public, including by publication on its website or by displaying the information at any of its offices. If you consider any part of your report to be confidential, please communicate this to the department via the message function on this submission within the NSW Resources Regulator Portal.

Mine details

Project description

The Vickery Coal Mine (VCM) is an open cut coal mine located in the Gunnedah Coal Basin, approximately 25 kilometres (km) north of Gunnedah in New South Wales (NSW). The VCM is operated by Vickery Coal Pty Limited (VCPL) (a wholly owned subsidiary of Whitehaven Coal Limited [Whitehaven]).

Development Consent (SSD-7480) was granted to VCPL on 12 August 2020 by the NSW Independent Planning Commission as a delegate of the NSW Minister for Planning under section 75J of the NSW Environmental Planning and Assessment Act 1979 (EP&A Act). VCM encompasses the closed site, Canyon Coal Mine, for which a development consent is still active. A previous development consent for VCM, SSD-5000 has yet to be relinquished.

Planned construction over the next three years (this Forward Program term) will include the following:

- construction of the mine infrastructure area (MIA);
- construction of run-of-mine (ROM) pads;
- initial development of the box cut and associated infrastructure.

Life of mine

22 years

Current development consents, leases and licences

Development consents granted under the *Environmental Planning and Assessment Act 1979*

SSD-7840
SSD-7840
SSD-7840
SSD-7840
SSD-7840
SSD-7840
SSD-7840
SSD-7840
SSD-7840
SSD-7840

SSD-7840
SSD-7840
SSD-7840
SSD-7840
SSD-7840
SSD-7840
SSD-7840
SSD-7840
SSD-7840

Authorisations covering the mining area granted under the *Mining Act 1992*

ML 1718 (1992), ML 1471 (1992), ML 1464 (1992), ML 1838 (1992), CL 316 (1973)

Any other approvals, licences, or authorities issued by government agencies that are relevant to the progress of mining operation and rehabilitation activities

DA 8-1-2005
SSD-5000

Summary of the scope and/or purpose of the new applications or modifications to existing approvals (if applicable)

N/A

Changes to land ownership and land use

The land ownership and use has not changed in this reported period.

Surface disturbance and rehabilitation activities during the reporting period

Surface disturbance and rehabilitation activities that were conducted and an analysis of the progress against the rehabilitation schedule

Only exploration drilling and geotechnical investigations have been conducted in the reporting period.

Rehabilitation planning activities that were conducted, including any specialist studies

The Rehabilitation Management Plan was developed in the reporting period as part of the initial period following the standard conditions coming into effect.

No specialist studies were compiled as part of this process, previous studies were relied upon from the EIS.

Overview of subsidence repair and/or remediation works undertaken

No subsidence repair or remediation works have been undertaken.

Overview of rehabilitation management and maintenance activities

No reseeding and rehabilitation management activities have been undertaken.

Details of any rehabilitation actions taken as required by any letters, notices or directions issued by government agencies, including the NSW Resources Regulator

No notices or directions have been received.

Details of any rehabilitation areas that have achieved the final land use

Not applicable

Key production milestones

MATERIAL	UNIT	FWP0001056 YEAR 1		THIS REPORT
Stripped topsoil (if applicable)	(m ³)	0		0
Rock/overburden	(m ³)	0		0
Ore	(Mt)	0		0
Reject material¹	(Mt)	0		0
Product	(Mt)	0		0

¹ This includes coarse rejects, tailings and any other wastes resulting from beneficiation.

Disturbance and rehabilitation statistics

Current disturbance and rehabilitation progression

ELEMENT	UNIT	THIS REPORT
A Total surface disturbance footprint	(ha)	718.63
B Total active disturbance	(ha)	110.69
C Land prepared for rehabilitation	(ha)	29.36
D Ecosystem and land use establishment	(ha)	175.3
E Ecosystem and land use development	(ha)	403.28
F Rehabilitation completion	(ha)	0

Rehabilitation key performance indicators (KPIs)

ELEMENT	UNIT	THIS REPORT
G Total new active disturbance area	(ha)	NA - this value will display after 2nd year ARR submission as calculation relies on comparison between sequential yearly ARR data
H New rehabilitation commenced during annual reporting period	(ha)	NA - this value will display after 2nd year ARR submission as calculation relies on comparison between sequential yearly ARR data
I Established rehabilitation	(ha)	403.28
J Annual rehabilitation to disturbance ratio	%	NA - this value will display after 2nd year ARR submission as calculation relies on comparison between sequential yearly ARR data
K Rehabilitated land to total mine footprint	%	56.12

Progressive achievement of established rehabilitation

ELEMENT		UNIT	THIS REPORT
L	Established rehabilitation - agricultural final land uses	%	0
M	Established rehabilitation - native ecosystem final land uses	%	94.64
N	Established rehabilitation - other/non-vegetated final land uses	%	1.62

Variation to the rehabilitation schedule

Identify the components of the most recent forward program that were not achieved

The forward program has been updated to include current disturbed areas (tracks etc) that will be used as part of the Vickery Expansion Project (VEP) SSD7480 and to accurately include the total rehabilitated areas from the Canyon Mine (Closed) and the old Vickery Mine (Closed in 1990s). Some of these areas are to be disturbed as part of the VEP.

Key factors that delayed progressive rehabilitation

Not applicable.

Outline actions that will be included in the forward program and carried out to minimise disturbance and undertake progressive rehabilitation as far as reasonably practical

The most recent Forward Program reflects the first three years of the VEP and as such there is no rehabilitation planned. However the mine plan includes topsoil stripping and storage to maximise growth medium inventory and prepare for future rehabilitation.

Rehabilitation monitoring and research findings

Rehabilitation monitoring

The rehabilitation monitoring carried out in the annual reporting period

Annual Ecological Report Summaries
Woodland Domain Groundcover
Five individual sites met the completion criterion 50% minimum target.
Woodland Domain seedling densities
Overall established tree health was good with all trees in plots heathy and growing, and fruits were present across a range of species.
Pasture Domain Groundcover
All Pasture Domain sites exceeded groundcover targets. Pasture Domain rehabilitation met key completion criterion target analogue mean value for grass biomass (kg/ha). Pasture composition is measured comparable to analogue values.
Fauna
Native Vegetation Domain rehabilitation sites contained a variety of habitat features. Hollows have yet to develop in planted trees due to maturity of rehabilitation.

Status of performance against rehabilitation objectives and rehabilitation completion criteria

The monitoring program that has been implemented

A detailed annual ecological assessment of rehabilitated areas and analogue sites was undertaken by Aspect Ecology Pty Ltd during October/November 2022 which compares progression of site against closure criteria.
--

Are all rehabilitation areas in Landform Establishment phase or higher represented in the monitoring program to assess performance against the rehabilitation objectives and approved or, if not yet approved rehabilitation completion criteria and final landform and rehabilitation plan?

NO

Year rehabilitation areas will be included as part of the monitoring program

N/A

An appraisal of whether rehabilitation is moving towards achieving the proposed rehabilitation objectives, approved or, if not yet approved, rehabilitation completion criteria and final landform and rehabilitation plan as soon as reasonably practicable.

All Pasture Domain sites exceeded groundcover targets. Pasture Domain rehabilitation met key completion criterion target analogue mean value for grass biomass (kg/ha). A number of sites in the Native Domain Rehabilitation showed high native species richness, approximating analogue values and the others meeting OEH benchmark values and positively trending toward achieving closure criteria.

Appraisal description

Rehabilitation is moving towards achieving the final land use as soon as reasonably practicable.

Rehabilitation monitoring program findings

A detailed annual ecological assessment of rehabilitated areas and analogue sites was undertaken by Aspect Ecology Pty Ltd during October/November 2022. Monitoring was undertaken using the Whitehaven Annual Rehabilitation Monitoring Methodology (WARMM—Aspect Ecology 2022).

Monitoring in the Woodland Domain comprised:

- the repeat monitoring of one ‘best-on-offer’ (DPIE 2020) local analogue woodland site situated in the Poplar Box – Yellow Box – Western Grey Box grassy woodland Plant Community Type ID 101 in the BioNet Vegetation Classification System); and
- repeat monitoring of twelve Woodland Domain sites.

Monitoring in the Pasture Domain comprised:

- repeat monitoring of one analogue; and
- repeat monitoring of five rehabilitation sites.

Performance issues and their causes including identification of any knowledge gaps that must be addressed

Nil

Outcomes of rehabilitation research and trials

RRT NUMBER	PROJECT/TRIAL NAME	OBJECTIVE OF TRIAL/PROJECT	METHODOLOGY	EXPECTED DATE OF COMPLETION	UPDATEDDATE OF COMPLETION	STATUS	ON TRACK?	ON TRACK UPDATE
---------------	-----------------------	----------------------------	-------------	--------------------------------	------------------------------	--------	--------------	-----------------------

ARR000110
1

Outcomes of completed trials and research

N/A

Attachment 1 – Reporting Definitions

REPORTING CATEGORY		DEFINITION
A1	Total disturbance footprint – surface disturbance	<p>All areas within a mining lease that either have at some point in time or continue to pose a rehabilitation liability due to surface disturbance activities.</p> <p>The total disturbance footprint is the sum of the total active disturbance, decommissioning, landform establishment, growth medium development, ecosystem and land use establishment, ecosystem and land use development and rehabilitation completion (see definitions below).</p> <p>Underground mining operations should not include the footprint of underground mining areas/subsidence management areas in the total disturbance footprint.</p>
A2	Underground Mining Area	Underground mining operations areas/subsidence management areas.
B	Total active disturbance	Includes on-lease exploration areas, stripped areas ahead of mining, infrastructure areas, water management infrastructure, sewage treatment facilities, topsoil stockpile areas, access tracks and haul roads, active mining areas, waste rock emplacements (active/unshaped/in or out-of-pit), tailings dams (active/unshaped/uncapped) and temporary stabilised areas (e.g. areas sown with temporary cover crops for dust mitigation and temporary rehabilitation).
C	Rehabilitation – land preparation	<p>Includes the sum of all disturbed land within a mining lease that have commenced any, or all, of the following phases of rehabilitation– decommissioning, landform establishment and growth medium development.</p> <p>Refer to the glossary of terms in this document for the definition of these phases of rehabilitation.</p>

REPORTING CATEGORY	DEFINITION
D Ecosystem and land use establishment	<p>Includes the area which has been seeded/planted with the target vegetation species for the intended final land use. However, vegetation has not matured to a stage where it can be demonstrated that it will be sustainable for the long term and or require only a maintenance regime consistent with target reference/analogue sites.</p> <p>Typically, rehabilitation areas would be in this phase for at least two years (and usually more) before rehabilitation can be classified as being in the ecosystem and land use development phase. This phase does not apply to infrastructure areas that are being retained as part of final land use for the site.</p>
E Ecosystem and Land Use Development	<p>Rehabilitation has matured to a level where target revegetation outcomes are on a trajectory towards meeting the final rehabilitation objectives and rehabilitation completion criteria (as verified by monitoring).</p> <p>This phase includes infrastructure areas that are to be retained for an approved post mining land use, following completion of all necessary measures to render the infrastructure fit for this purpose (for example structural integrity).</p>
F Rehabilitation Completion	<p>The NSW Resources Regulator has determined in writing that the mining area has achieved the approved rehabilitation objectives and approved rehabilitation completion criteria and final landform and rehabilitation plan following the submission of <i>Form: ESF2 Rehabilitation completion and/or review of rehabilitation cost estimate and/or notification of mine or petroleum site closure</i>.</p>
G New active disturbance area	<p>The area of any new active disturbance that has been created during the annual reporting period (definition A1 in Table 5).</p>
H New rehabilitation commenced during annual reporting period	<p>The sum of any new rehabilitation commenced in the annual reporting period. These areas may be in the rehabilitation land preparation phase or the ecosystem & land use establishment phase (definitions C and D in Table 5).</p>
I Established rehabilitation (hectares)	<p>The total area of land that is verified to be within either the ecosystem and land use development phase or the rehabilitation completion phase (definitions E & F in Table 5).</p>

REPORTING CATEGORY		DEFINITION
J	Annual rehabilitation to disturbance ratio	The rehabilitation to disturbance ratio (H/G) indicates how many hectares of new rehabilitation are undertaken for each hectare of land disturbed during the year. A ratio of 1/1 indicates that the area of new rehabilitation and disturbance in that year are the same.
K	% Rehabilitated land to total mine footprint	The proportion of the total mine footprint (area of land that has been disturbed by past or present surface disturbance activities) that has established rehabilitation ($I/A1 \times 100$). For open cut mining, the proportion of the total mine footprint verified to be “established rehabilitation” should substantially increase as an operation progresses towards mine closure.
L	Established rehabilitation for agricultural final land uses (hectares)	The percentage of total area of land that is verified to be within either the ecosystem and land use development phase or the rehabilitation completion phase (definitions E & F in Table 5) that have been returned to an agricultural final land use.
M	Established rehabilitation for native ecosystem final land uses (hectares)	The percentage of total area of land that is verified to be within either the ecosystem and land use development phase or rehabilitation completion phase (definitions E & F in Table 5) that have been returned to native ecosystem final land use.
N	Established rehabilitation for other/non-vegetated final land uses (hectares)	The percentage of total area of land that is verified to be within either the ecosystem and land use development phase or the rehabilitation completion phase (definitions E & F in Table 5) that have been returned to other/non-vegetated final land use.

Attachment 2 – Definitions

WORD	DEFINITION
Active	In the context of rehabilitation, land associated with mining domains is considered 'active' for the period following disturbance until the commencement of rehabilitation.
Active mining phase of rehabilitation	In the context of rehabilitation, the active mining phase of rehabilitation constitutes the rehabilitation activities undertaken during mining operations such as salvaging and managing soil resources, salvaging habitat resources, and native seed collection. This phase also includes management actions taken during operations to manage risks to rehabilitation and enhance rehabilitation outcomes such as selective handling of waste rock and management of tailings emplacements.
Analogue site	In the context of rehabilitation, an analogue site is a 'reference site' that represents an example of the defining characteristics (such as vegetation composition and structure or agricultural productivity) of the final land use. Characteristics of analogue sites can be assessed to develop the rehabilitation objectives and completion criteria for final land use domains.
Annual rehabilitation report and forward program	As described in the Mining Regulation 2016.
Annual reporting period	As defined in the Mining Regulation 2016.
Closure	A whole-of-mine-life process, which typically culminates in the relinquishment of the mining lease. It includes decommissioning and rehabilitation to achieve the approved final land use(s).
Decommissioning	The process of removing mining infrastructure and removing contaminants and hazardous materials.
Decommissioning Phase of Rehabilitation	Activities associated with the removal of mining infrastructure and removal and/or remediation of contaminants and hazardous materials. In the context of the rehabilitation management plan this phase of rehabilitation may also include studies and assessments associated with decommissioning and demolition of infrastructure or works carried out to make safe or 'fit for purpose' built infrastructure to be retained for future use(s) following lease relinquishment.

WORD	DEFINITION
Department	The Department of Regional NSW.
Disturbance	See Surface Disturbance.
Disturbance area	<p>An area that has been disturbed and that requires rehabilitation.</p> <p>This may include areas such as on-licence exploration areas, stripped areas ahead of mining, infrastructure areas, water management infrastructure, sewage treatment facilities, topsoil stockpile areas, access tracks and haul roads, active mining areas, waste emplacements (active/unshaped/in or out-of-pit), tailings dams (active/unshaped/uncapped), and areas requiring rehabilitation that are temporarily stabilised (i.e. managed to minimise dust generation and/or erosion).</p>
Domain	<p>An area (or areas) of the land that has been disturbed by mining and has a specific operational use (mining domain) or specific final land use (final land use domain). Land within a domain typically has similar geochemical and/or geophysical characteristics and therefore requires specific rehabilitation activities to achieve the associated final land use.</p>
Ecosystem and Land Use Development	<p>This phase of rehabilitation consists of the activities to manage maturing rehabilitation areas on a trajectory to achieving the approved rehabilitation objectives and completion criteria.</p> <p>For vegetated land uses this phase may include processes to develop characteristics of functional self-sustaining ecosystems, such as nutrient recycling, vegetation flowering and reproduction, and increasing habitat complexity, and development of a productive, self-sustaining soil profile.</p> <p>This phase of rehabilitation may include specific vegetation management strategies and maintenance such as tree thinning, supplementary plantings and weed management.</p>
Ecosystem and Land Use Establishment	<p>This phase of rehabilitation consists of the processes to establish the approved final land use following construction of the final landform.</p> <p>For vegetated land uses this rehabilitation phase includes establishing the desired vegetation community and implementing land management activities such as weed control. This phase of rehabilitation may also include habitat augmentation such as installation of nest boxes.</p>
Exploration	Has the same meaning as that term under the State Environmental Planning Policy (Mining, Petroleum Production and Extractive Industries) 2007.

WORD	DEFINITION
Final landform and rehabilitation plan	As defined in the Mining Regulation 2016.
Final land use	As defined in the Mining Regulation 2016.
Form and way	Means the form and way approved by the Secretary. Approved form and way documents are available on the Department's website.
Growth Medium Development	<p>This phase of rehabilitation consists of activities required to establish the physical, chemical and biological components of the substrate required to establish the desired vegetation community (including short lived pioneer species).</p> <p>This phase may include spreading the prepared landform with topsoil and/or subsoil and/or soil substitutes, applying soil ameliorants to enhance the physical, chemical and biological characteristics of the growth media, and actions to minimise loss of growth media due to erosion.</p>
Habitat	Has the same meaning as that term under the <i>Biodiversity Conservation Act 2016</i> and the <i>Fisheries Management Act 1994</i> (as relevant).
Indicator	An attribute of the biophysical environment (e.g. pH, topsoil depth, biomass) that can be used to approximate the progression of a biophysical process. It can be measured and audited to demonstrate (and track) the progress of an aspect of rehabilitation towards a desired completion criterion (i.e. defined end point). It may be aligned to an established protocol and used to evaluate changes in a system.
Land	As defined in the <i>Mining Act 1992</i> .
Landform Establishment	<p>This phase of rehabilitation consists of the processes and activities required to construct the final landform.</p> <p>In addition to profiling the surface of rehabilitation areas to the approved final landform profile this phase may include works to construct surface water drainage features, encapsulate problematic materials such as tailings, and prepare a substrate with the desired physical and chemical characteristics (e.g. rock raking or ameliorating sodic materials).</p>
Large mine	As defined in the Mining Regulation 2016.
Lease holder	The holder of a mining lease.

WORD	DEFINITION
Life of mine	The timeframe of how long a mine is approved to mine, from commencement to closure.
Mine rehabilitation portal	<p>Means the NSW Resources Regulator's online portal that lease holders must use (via a registered account) to:</p> <ul style="list-style-type: none"> ■ upload rehabilitation geographical information system (GIS) spatial data ■ develop rehabilitation GIS spatial data (using online tracing functions) ■ generate rehabilitation plans and rehabilitation statistics using the map viewer and Rehabilitation Key Performance Indicator functionalities. <p>Data submitted to the mine rehabilitation portal is collated in a centralised geodatabase for use by the NSW Resources Regulator to regulate rehabilitation performance of lease holders.</p>
Mining area	As defined in the <i>Mining Act 1992</i> .
Mining domain	A land management unit with a discrete operational function (e.g. overburden emplacement), and therefore similar geophysical characteristics, that will require specific rehabilitation treatments to achieve the final land use(s).
Mining land	As defined in the <i>Mining Act 1992</i> .
Native vegetation	Has the same meaning as that term under section 60B of the <i>Local Land Services Act 2013</i> .
Overburden	Material overlying coal or a mineral deposit.
Performance indicator	An attribute of the biophysical environment (for example pH, slope, topsoil depth, biomass) that can be used to demonstrate achievement of a rehabilitation objective. It can be measured and audited to demonstrate (and track) the progress of an aspect of rehabilitation towards a desired completion criterion, that is, a defined end point. It may be aligned to an established protocol and used to evaluate changes in a system.

WORD	DEFINITION
Phases of rehabilitation	<p>The stages and sequences of actions required to rehabilitate disturbed land to achieve the final land use. The phases of rehabilitation are:</p> <ul style="list-style-type: none"> ■ active mining ■ decommissioning ■ landform Establishment ■ growth medium development ■ ecosystem and land use establishment ■ ecosystem and land use development.
Progressive rehabilitation	The progress of rehabilitation towards achieving the approved rehabilitation completion criteria. This may be described in terms of domains, phases, performance indicators and rehabilitation completion criteria.
Rehabilitation Completion	<p>The final phase of rehabilitation when a rehabilitation area has achieved the approved rehabilitation objectives and rehabilitation completion criteria for the final land use. Rehabilitation areas may be classified as complete when the NSW Resources Regulator has determined in writing that the relevant rehabilitation obligations have been fulfilled following submission of <i>Form ESF2 Rehabilitation completion and/or review of rehabilitation cost estimate</i> application by the lease holder.</p>
Rehabilitation Completion criteria	As defined in the Mining Regulation 2016.
Rehabilitation cost estimate	As defined in the Mining Regulation 2016.
Rehabilitation management plan	As defined in the Mining Regulation 2016.
Rehabilitation objectives	As defined in the Mining Regulation 2016.
Rehabilitation risk assessment	As defined in the Mining Regulation 2016.
Rehabilitation schedule	The defined timeframes for progressive rehabilitation set out in the forward program.

WORD	DEFINITION
Relevant stakeholders	Means any persons or bodies who may be affected by the mining operations, including rehabilitation, carried out on the lease land, and includes: <ul style="list-style-type: none"> ■ the relevant development consent authority ■ the local council ■ the relevant landholder(s) ■ community consultative committee (if required under the development consent) or equivalent consultative group ■ affected land holder(s) ■ government agencies relevant to the final land use ■ affected infrastructure authorities (electricity, telecommunications, water, pipeline, road, rail authorities) ■ local Aboriginal communities, and ■ any other person or body determined by the Minister to be a relevant stakeholder in relation to a mining lease.
Risk	The effect of uncertainty on objectives. It is measured in terms of consequences and likelihood (AS/NZS ISO 31000:2009).
Secretary	The Secretary of the Department.
Security deposit	An amount that a mining lease holder is required to provide and maintain under a mining lease condition, to secure funding for the fulfilment of obligations under the lease (including obligations that may arise in the future).
Surface disturbance	Includes activities that disturb the surface of the mining area, including mining operations, ancillary mining activities and exploration.
Tailings	A combination of the fine-grained solid material remaining after the recoverable metals and minerals have been extracted from the mined ore, and any process water ² .
Waste	Has the same meaning as that term under the <i>Protection of the Environment Operations Act 1997</i> .

² Commonwealth of Australia (DITR), 2007. *Tailings Management*.

Attachment 3 – Rehabilitation Complaints

DATE	COMPLAINANT	COMPLAINT DETAILS	RESPONSE DETAILS	STATUS OF RESPONSE	DATE RESPONSE COMPLETED (IF APPLICABLE)
------	-------------	-------------------	------------------	--------------------	--

Attachment 4 – Stakeholder consultation

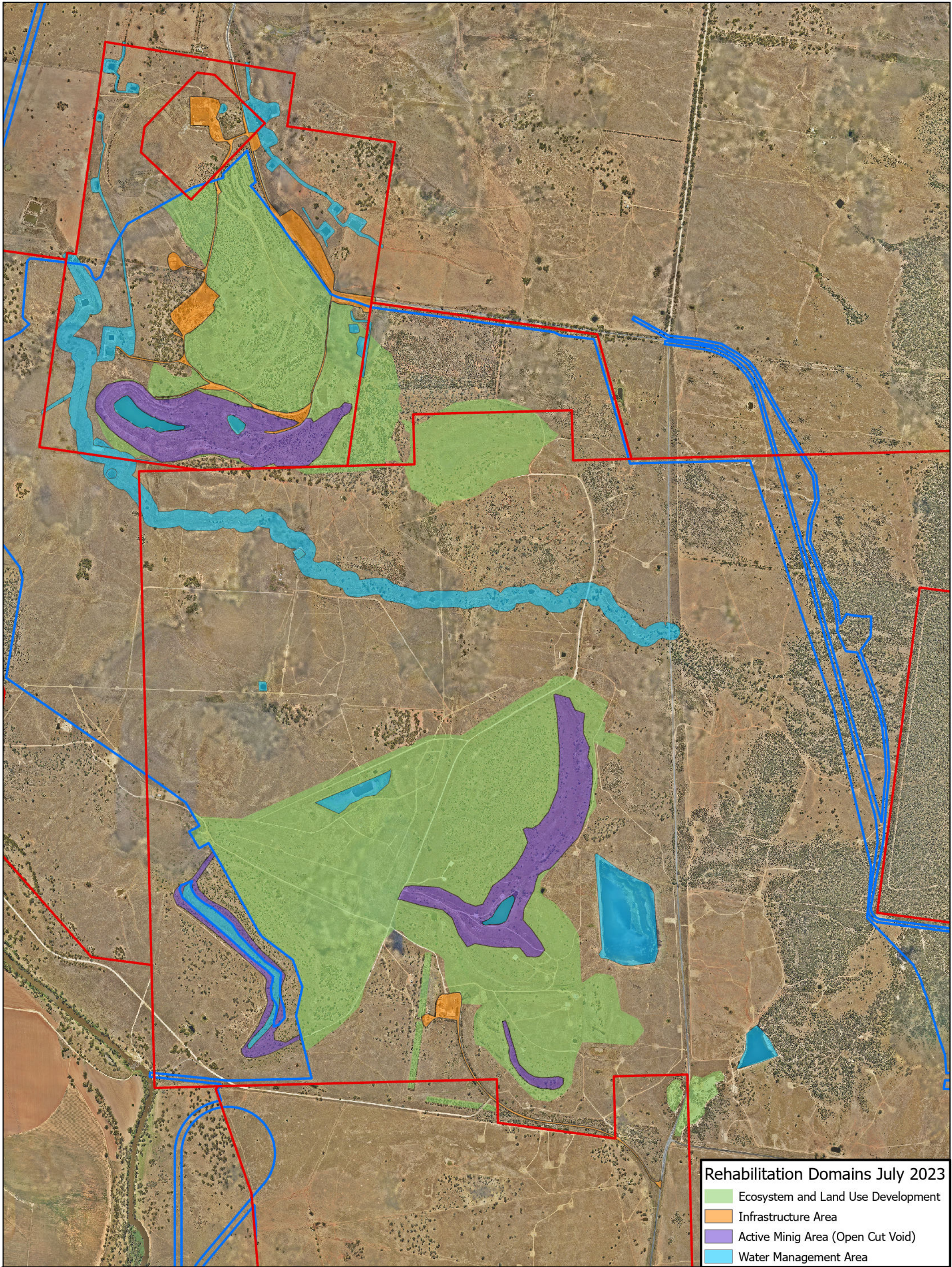
DATE	STAKEHOLDER	CONSULTATION ACTIVITIES AND FORMS	MATTERS SUBJECT TO CONSULTATION	ACTIONS TAKEN
7 Sep 2022	Community Consultative Committee	Presentation of monitoring results and panel discussion with CCC members chaired by an Independent Chair.	Presentation by Social Impact consultant, SMEC. Questions arose as to noise monitoring for the rail loop- this will happen at the time of construction. Questions also arose as to the Santos pipeline which will pass under the trainline.	None
26 Apr 2023	Community Consultative Committee	A short presentation on monitoring results followed by updates on project progress from the executive team leading the project.	Communication regarding the final road alignment of Blue Vale Road, access for the public to fishing locations, and queries regarding the train line and how it will maintain the flow across the flood plain during a flood. There was also discussion regarding groundwater monitoring and how long it will continue.	Matters raised were discussed and closed out at the meeting.

Attachment 5 – Plans

VEP_Plan1A_Status_Mining_Rehab_July_2023.pdf

VEP_Plan1B_Current Landform Contours_July_2023.pdf

Annual Report (LARGE MINE) v1.6



Rehabilitation Domains July 2023

- Ecosystem and Land Use Development
- Infrastructure Area
- Active Mining Area (Open Cut Void)
- Water Management Area

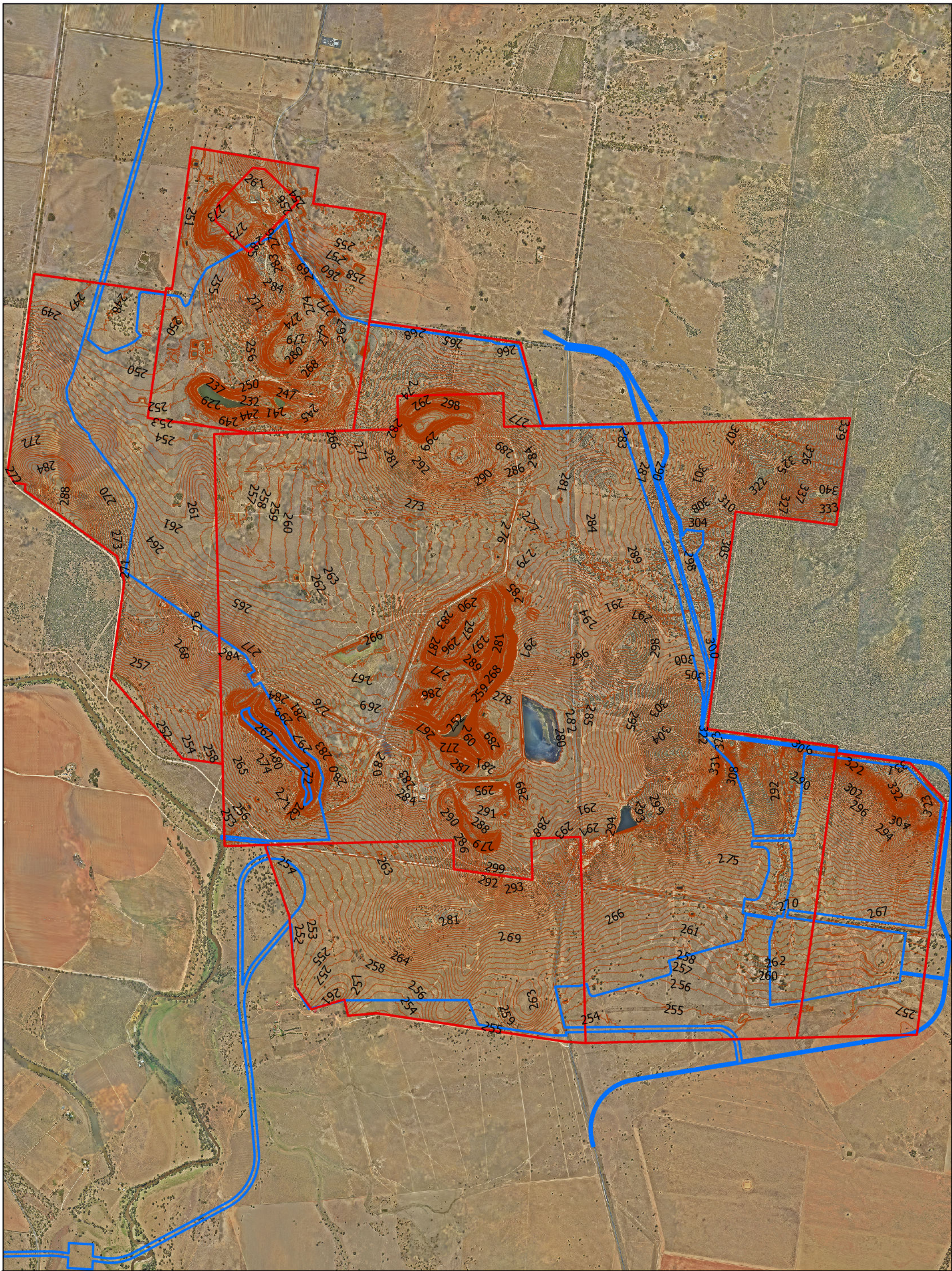


Vickery Coal Mine
Status of Mining

Plan 1A August 23 -August 24

- Mining Lease
- PA Disturbance Boundary

Datum: MGA Zone 56 Image: March 23
Date: July 2023 Author: A.Raal Scale: 1:20,000 (A3)



Vickery Coal Mine Landform Contours

Plan 1B
Current Landform Contours

- ▬ Mining Lease
- ▬ PA Disturbance Boundary
- ▬ Contours 1m 2023

\\Spatial\ARCGIS\WHC Survey Rehab\Rehab_GIS_Portal.gdb

Datum: MGA Zone 56 Image: March 23
Date: July 2023 Author: A.Raal Scale: 1:20,000 (A3)